

January 2012

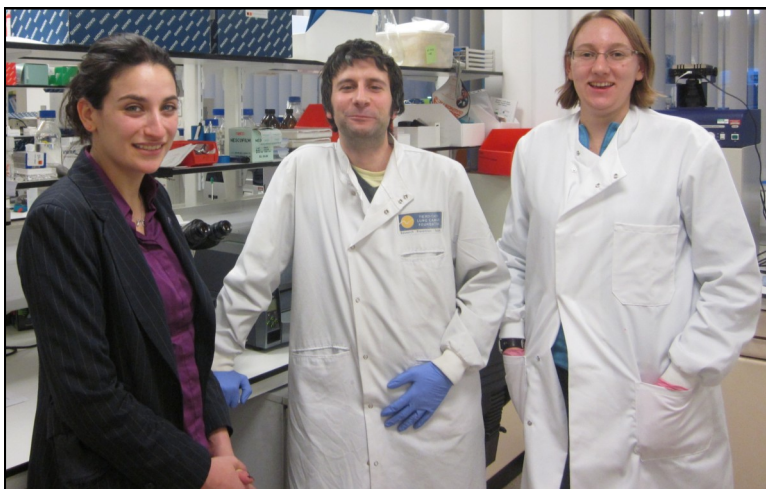
Welcome

to the latest edition of the Cancer Community Update from the Liverpool Cancer Research UK Centre. This update is designed to keep you informed of local research news, engagement activities and news from the wider cancer community in Merseyside and Cheshire. Please contact Local Engagement and Development Manager Emma Squibb to contribute or comment. emma.squibb@cancer.org.uk 0151 794 8823 or 07770 597 185



MP Luciana Berger Visits

Wavertree MP Luciana Berger paid the Centre a visit on 2nd December. Luciana heard about cancer incidence and mortality in Liverpool, and the lifestyle factors which often contribute. Luciana said, "Thank you so much for the visit, I had no idea how much research goes on in Liverpool."



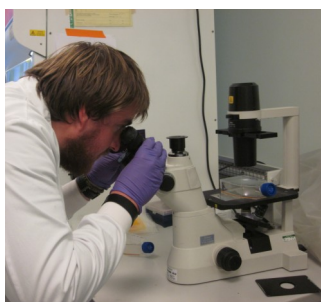
Where's Wallace? In Liverpool

Intrepid CRUK supporter Matt Wallace, who is walking from John O'Groats to Land's End, visiting all 16 CRUK Centres en route, arrived in Liverpool on December 8th. Matt met with Professor Neoptolemos and Bill Greenhalf showed Matt around the pancreas research labs.

After lunch, and a small rest, Matt met with the Ocular Oncology group, hearing about their research and treatment facilities from Profs Bertil Damato and Sarah Coupland. Sarah Lake and Helen Kalirai then showed Matt some of their current work. Matt finished the day talking to Charlotte Rawcliffe of LCTU.

Matt has raised over £8000 so far and is currently heading south from Birmingham. He has another 700 or so miles to cover, so good luck from all at Liverpool.

www.whereswallace.org



Together we will beat cancer

Cancer news

Gary Ablett, the only player to win the FA Cup with Liverpool and Everton is being remembered by professionals and fans alike, following his death on New Year's Day, aged 46.

The former defender, and most recently manager of Stockport County, had suffered from non-Hodgkin's lymphoma for more than 16 months. [More](#)

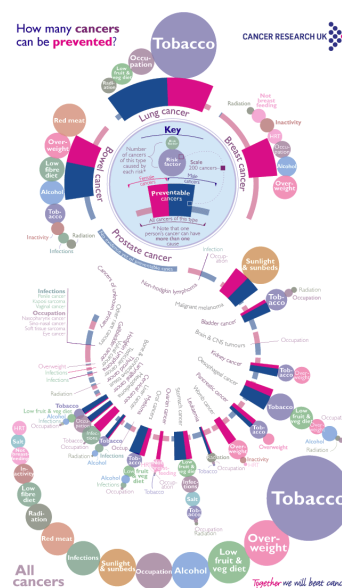


Cancer Stats Latest

In December the findings of Parkin et al (2011) were published in a supplement to the British Journal of Cancer. The report, which was carried out with funding from Cancer Research UK, estimates the proportion of cancers in the UK in 2010 that were attributable to 14 major lifestyle and environmental factors earlier in life.

Smoking was confirmed as by far the most important preventable cause of cancer, with nearly a fifth of all cancers due to this factor, including more than 8 out of 10 lung cancers. After smoking, being overweight, drinking alcohol and having a poor diet were the most important preventable causes of cancer. Other important exposures included occupation, with nearly 4% of cancers linked to this factor, and infections, linked to around 3% of cases.

The NHS faces huge cancer challenge as UK cancer cases are set to **jump by 45 per cent**. In October 2011 our researchers published UK cancer incidence projections up to 2030 in the British Journal of Cancer. The results show that overall age-standardised incidence rates are not expected to increase. However, due to the projected population aging and growth the number of people diagnosed with the disease is expected to go from just over 300,000 now to around 430,000 cases in 2030. The rate of malignant melanoma – the most dangerous form of skin cancer – has the biggest projected increase, rising by 52 per cent from 2007-2030 for both men and women.



CancerStats Online, on paper and on email

- Our CancerStats website is the leading source of UK cancer statistics
- Download over 500 charts and tables on incidence, mortality and survival in the UK, Europe and the World, covering 27 cancer sites and all cancers together
- Download our CancerStats reports giving more in-depth detailed explanations about cancer stats and risk factors
- Find useful links to other data sources
- Find us online at <http://info.cancerresearchuk.org/cancerstats/> or simply google "CancerStats"
- Contact the Stats Team at stats.team@cancer.org.uk

Cherry does Liverpool TV Presenter Cherry Healey, best known for her BBC3 series, "Cherry does" recently visited Dr. Daimark Bennett and his group. Cherry is supporting the North West Cancer Research Fund's O-Very campaign and saw the work being done with fruit flies.

She said: "Women are unlikely to think they have ovarian cancer because the symptoms are often similar to a stomach ache or doctor's may misdiagnose cancer as Irritable Bowel Syndrome. I was shocked and moved to hear that ovarian cancer is the fifth most common cancer in women in the UK, killing 4,000 people every year." [more](#)



Local Engagement



A group of CRUK supporters from Ainsdale, who raised funds with a concert last year, visited the labs of Prof Sylvie Urbé on 1st December. The group were so impressed with the work they saw that they are now planning another fundraising event for 2012.

Cancer Research UK Merseyside & Cheshire Events Calendar



= Researcher/ Scientist opportunity

Please contact Cancer Research UK Local Engagement Manager, [Emma Squibb](#) for details of how you can get involved.

January 2012

19th Cancer Awareness training 
23rd Lord Mayor Visit

February 2012

On Wednesday 8th February 2012 at Liverpool Town Hall, Liverpool Cancer Research UK Centre will be formally presented with our Scroll of Freedom of the City of Liverpool by the Lord Mayor of Liverpool.

The event will be attended by key staff and senior representatives of CRUK and our partner organisations.

Attendance is by invitation only.

The Centre's Donation Station total has now exceeded **£21,600**.

Bernie does it again! Wirral based CRUK supporter Bernie Singleton presented a cheque representing a year of non stop fundraising. This year Bernie presented a cheque for an incredible £25,155.50.

In the last 3 years Bernie has raised over £56,000 for the charity and has plans to continue in 2012. Bernie will be hosting her 3rd annual summer event in July and is currently working on a fundraising event in Tenerife.



Local People



Professor Youqiang Ke has been asked to join the Editorial Academy of Spandidos' Publications. As a result of this, his work has been introduced in the Cover Legend of the latest issue of International Journal of Oncology:

<http://www.spandidos-publications.com/ijo/39/6>

Merseyside women caught up in implant cancer scare

A Merseyside woman is demanding a meeting with the Prime Minister amid fears that thousands of women have breast implants linked to cancer. Following the death of a woman in France from a rare form of cancer, the French authorities are expected to ask 30,000 women who received implants manufactured by Poly Implant Prothese (PIP) to have them removed. Susan Craney, 55, from Knotty Ash, who is the administrator of PIP Implant Support – a national group that represents 235 members – said the group now wanted a meeting with the Prime Minister to discuss what she branded as being the beginning of a national scandal.



Some 50,000 British women are thought to have had PIP implants – more than 1,000 from Merseyside. The implants are filled with an unapproved gel and there have also been reports that the protective barriers are faulty. The implants were linked to the death of the French woman from a rare form of cancer, called anaplastic large cell lymphoma (ALCL), and are implicated in another seven or eight cancer cases. The MHRA said it was aware of the death in France, but its own testing last year revealed no evidence of a link with cancer. A spokesman said: "The MHRA continues to monitor for any associations of all types of breast implants, including PIP, with cancers." [more](#)

A total of £525.04 has been donated to the Pancreatic Cancer Research Group thanks to the generous donations from Brenda Seddon's family and friends. Brenda battled Pancreatic Cancer for 14 months but sadly passed away in November 2011. Her sons, John and Phil, returned to the Pancreatic Clinical Research Facility to present the cheque to Mr. Chris Halloran.



John said, "The care my mum has received from start to finish has been absolutely fantastic, she said so herself. We couldn't have asked for more".

Phil said, "Because of the care mum received this was the least we could do and we hope to raise awareness in the future. It's great to know that this donation will directly go towards funding this research".

(also pictured, Laura Brown, Cathy Whittemore, Phil Whelan and Faye Hughes.)

Together we will beat cancer

Local News

Clatterbridge Cancer Research would like to congratulate Peter Seeger on raising £14,800 and becoming the charity's fundraiser of the year 2011! Peter was a member of the cycle Jordan team which recently returned victorious from the challenge having raised more than £27,000 as a group. The Wirral jeweller is a long-standing supporter of the charity since his former wife was diagnosed with cancer.



Well done to those who braved North Pole like conditions for the Liverpool Santa Dash on 4th December. We raised £175.00 for CRUK.

A group of volunteers from Liverpool have raised more than £35,000 to buy a piece of equipment which helps early detection of cancer. The League of Friends, a group of volunteers based at Aintree University Hospital, held a series of events and sponsorship initiatives to raise funds for ultra-thin 5mm High Definition laparoscopes, an instrument that aids in the delivery of keyhole bowel surgery. The pencil-thin instrument enables surgeons to get a clear view inside the abdominal cavity on a TV monitor.

James Arthur, Consultant Colorectal Surgeon at Aintree University Hospital, said: *"This equipment is important in helping us deliver a sterling keyhole bowel surgery service. The benefits for patients include less pain after operations, earlier mobilisation, shorter hospital stay and smaller scars. I would like to thank the League of Friends for their fundraising efforts, which are hugely appreciated."*

Bettina Fairclough, Chairperson of the League of Friends, added: *"We have a dedicated team of volunteers who generously give up their free time to help raise money for important causes and it is great to see the results of our fundraising helping to save lives."*

The League of Friends has been established for nearly 60 years and in that time has raised millions of pounds for charitable causes at University Hospital Aintree and the nearby Walton Centre for Neurology. The group is now aiming to raise more than £70,000 to buy a halo ablator, which will be one of the first in the UK, for the detection and treatment of pre-cancerous cells in the oesophagus, and the latest endo-laser equipment for retinal ophthalmology to prevent blindness.

The League of Friends is a local charity working to help local people and provides funding for pioneering medical equipment which is unavailable from the NHS.



Contribute

If you would like to contribute to the next edition of this update, please contact Emma on emma.squibb@cancer.org.uk 0151 794 8823 or 07770 597 185

Together we will beat cancer