


Welcome

 **Welcome** to the latest edition of the Cancer Community Update from the Liverpool Cancer Research UK Centre. This update is designed to keep you informed of local research news, engagement activities and news from the wider cancer community in Merseyside and Cheshire. Please contact Local Engagement and Development Manager Emma Squibb to contribute or comment. emma.squibb@cancer.org.uk 0151 794 8823 or 07770 597 185

Top City Honour for Centre

At a meeting of Liverpool City Council in the Town Hall on Wednesday 19th January Liverpool Cancer Research UK Centre was granted Liverpool's highest civic honour, inclusion on the City's Freedom Roll of Association. The Centre will be presented with a prestigious scroll of honour by the Lord Mayor at a special civic reception later in the year.

The Centre was nominated for the award by Liverpool City Council Leader Joe Anderson, following his visit to our labs in November 2010. Former Everton player Dave Hickson will also receive freedom of the City. Mr Hickson receives his award for his contribution to football and his charity work, which includes raising thousands of pounds for local breast cancer support centre, [The Lily Centre](#).

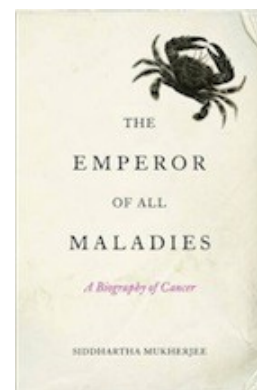


C-Team targets cancer stem cells

Four world class research groups have been picked to work together on an initial £500,000 two-year stem cell project. The scientists will focus on the role of stem cells in the development, growth and spread of breast, prostate and head and neck cancers. [Read more](#)

Cancer—The New Normal?

As our population ages, the question is not if we will encounter cancer in our lives, but when. Is it time we stopped fighting and learned to live with it? The Guardian recently printed an article by Siddhartha Mukherjee, an extract from the book "The Emperor of all Maladies", which poses this question. Read the article [here](#)



New Cancer Strategy Published

Improving Outcomes: a Strategy for Cancer. The latest Cancer Strategy has been published by the Department of Health - it can be [downloaded here](#).

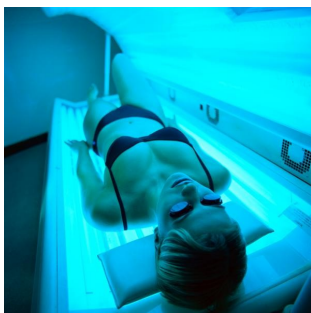
The [National Awareness and Early Diagnosis Initiative \(NAEDI\)](#) aims to achieve improved outcomes for people with cancer through earlier diagnosis. NAEDI co-ordinates and provides support for activities and research to promote earlier diagnosis of cancer. The sixth edition of the NAEDI newsletter is now available to download [here](#).



Scrap Sunbeds Campaign

Using sunbeds can increase your chances of getting skin cancer by 75%. [North West Cancer Research Fund](#) is leading a local campaign to persuade Gyms and Spas across the North West to remove sunbeds.

Chief Executive Anne Jackson says, "We are challenging gyms and spas across the North West to remember that they are in the health business and offering the use of sunbeds is a complete contradiction in terms."



- More than a quarter of a million 11 to 17 year olds are risking their health by using sunbeds.
- The risk of cancerous melanomas is increased by 75% when the use of tanning devices starts before 30 years of age.
- UV-emitting tanning devices are classified as "carcinogenic to humans," putting sunbeds in the same classification as smoking.

NWCRF is currently funding two projects researching skin cancer, the first looking at how UVA rays can lead to skin cancer and another at the metastasis of malignant melanoma or how the cancer spreads.

All gyms and spas signing up to NWCRF's skin cancer campaign will receive an official NWCRF certificate to publicly show they are taking a stand against skin cancer as well as a listing on the NWCRF website.

Those gyms and spas interested in signing up to NWCRF's skin cancer campaign should contact [Lucinda Bray](#) at NWCRF on 0151 709 2919



[Sign the petition here](#)

Liverpool's Decade of Health and Wellbeing

Liverpool Primary Care Trust and Liverpool City Council have decided to build on the achievements of 2010, Liverpool's Year of Health and Wellbeing, by announcing the next ten years will be the Decade of Health and Wellbeing. Both organisations will be working with a whole host of partners, including Cancer Research UK, towards the long term goal of a healthier city by 2020.

Gideon Ben-Tovim, Chair of Liverpool Primary Care Trust said: "Our population faces some major challenges in terms of both physical and mental health. In fact, in a survey conducted last year people from Liverpool scored lowest in the north west for overall mental wellbeing."

"During 2010 we made great progress in getting health and wellbeing firmly on the agenda in areas such as transport, education, business and housing, and it this collaborative approach that offers us the opportunity to make a real difference."

"The Decade of Health and Wellbeing will allow us to build on the success of 2010. This is partly about key organisations working together to ensure that health and wellbeing remains a priority for the city, but it also involves encouraging individuals to look at making some small, achievable life-style changes that could have a big effect on the way they feel."



Liverpool Cancer Research UK Centre will be contributing events to the 2020 calendar. If you would like to host an event please contact LEAD Manager [Emma Squibb](#).
[2020 website](#)

New Leaflet for Liverpool Centre

A new leaflet letting people know about the Centre's work is being launched this month. "Fighting Cancer in Merseyside and Cheshire" is available from [Emma Squibb](#), and will be available to download soon.

New Donation Station

The Centre now boasts 3 Donation Stations, with a new collection site in the Duncan Building Reception area. Our shops urgently need your unwanted household items and clothes. Please have a clear out and add to the £6300 already raised by the Centre's Donation Stations.

Race for Life 2011 February

Launch events are planned for Liverpool, Chester and Preston. It's great to have scientists at these events to remind people that the money they raise is spent on ground breaking research. If you can spare an hour to help out at one of the launch events, (dates opposite) please contact [me](#).

Last year scientists from the Centre, speaking at the start of local Race for Life events, reached over 30,000 people. It really makes a difference to supporters when they see scientists at these events, and helps the Centre raise it's local profile. None of this is possible without your help.

If you would like to help start a Race for Life with a short thank you speech, please contact [me](#).

I'm also looking for volunteers to represent the Centre at local events, helping to marshall, handing out medals etc.

All offers of help welcome. I have a large supply of blue CRUK t shirts.

May

15 Southport & Delamere Forest

June

5 Sefton Park & Rhyl

12 Wigan

19 Chester

26 Aintree (2)

July

3 Preston

6 Knowsley

10 Wirral

17 Warrington

24 Haydock

[sign up now](#)

www.raceforlife.org

Cancer Research UK Merseyside & Cheshire Events Calendar



= Researcher/ Scientist opportunity

Please contact Cancer Research UK Local Engagement Manager, [Emma Squibb](#) for details of how you can get involved.

February 2011

02 DLA Piper Lab Tour

04 Seminar Series: Hannah Barrow

05 Race for Life Launch Liverpool One

15 Guest Speaker: Erik Sahai

16 Health and Social Care Select Committee Visit

18 Seminar Series: Chris Holmberg

19 Race for Life Launch Chester

21 Guest Speaker: Jonathan Pines

24 Oswestry CRUK Fundraising Committee Lab Tour

25 Seminar Series Monika Chojnowska

26 Race for Life Launch Preston

Together we will beat cancer

Thanks

The Centre would like to sincerely thank Ian Leonard of **Anfield**, and his family and friends, for choosing to collect donations for CRUK in memory of his father.

Our thanks are also extended to staff of **Riverside** in **Speke** who collected over £330 for CRUK at a Christmas fundraiser and staff and pupils at **Priestley College, Warrington** who raised £450 for CRUK with a Pink Day.

Local
People

Bangor stalwart's fundraising efforts in memory of late daughter

A **Bangor** woman who lost her 15-year-old daughter to cancer is continuing her tireless fundraising in her memory by holding a fashion show. Glenys Tematema, who runs the tourism kiosk on the pier, lost daughter Bronwen nearly 22 years ago, and has raised around £750,000 since then. The latest event will be a fashion show in aid of CHICS (Children's Cancer Support Group) charity, at Oscars Lounge on Bangor High Street, which will take place on Thursday, February 24, at 7pm. "When you lose someone close to you like that and particularly so young, it's a huge emotional shock," said Mrs Tematema. CHICS is just one of the number of charities to benefit from her work. [More](#)



Vernon Cheque Presentation

Patrons of the Vernon Arms in **Liverpool** City Centre held a fundraising night in memory of their friend, Brian Latham, who died of cancer. On 21st January Carlos Rubbi, Alan English and Emma Squibb visited the pub and accepted a cheque for over £850 on behalf of Cancer Research UK. Our thanks to manager Jimmy and his customers.



Get Involved We are inviting **local people**, who have experience of cancer, to an event on 16th March which will see the launch of a joint public engagement project between the Royal and Liverpool Cancer Research UK Centre.

There are opportunities to get involved with a new cancer "buddy system" at the Royal and to be part of the governance structure of Liverpool Cancer Trials Unit, Liverpool ECMC and the Centre itself.

Anyone interested in finding out more is welcome to attend the event between 2 and 4 pm on 16th March at Liverpool Cancer Research UK Centre. [more](#)

Dr Sarah Coupland would like to hear from anyone interested in taking part in the [Liverpool Marathon](#) as part of a CRUK fundraising team. Contact [here](#)

Liverpool Cancer Trial Unit's **Charlotte Rawcliffe**, is planning to take part in ten Race for Life events this summer. Charlotte's "Race Route" will be featured in the next issue.

Wirral based Fundraiser **Bernie Singleton** is holding a CRUK fundraiser on 4th March, in Tenerife!

Emma Squibb has signed up to run Race for Life in Knowsley on 6th July. Sponsor her [here](#).

Congratulations to **Joseph Slupsky et al.** on having their paper published in *Blood*; their work on c-Abl regulates Mcl-1 gene expression in chronic lymphocytic leukaemia cells is available to view [here](#):

*Useful links,
statements and
other local news*



Help us tackle cancer in Liverpool

Did you know that Liverpool has some of the highest rates of cancer and the highest cancer death rate in England? This means that Liverpool has 355 more deaths per year than the national average ... It doesn't have to be this way! Together we can help to make positive changes for our communities!

- Do you know how to spot the early signs of cancer and how to get them checked out?
- Do you know about screening and support services that you could benefit from?

Liverpool LINK holding a series of meetings during February and we want to know what you think can be done to change things in Liverpool for the better. So, come along and have your say! What you tell us will help to make sure cancer screening services, GPs and public health campaigns respond to the needs of all Liverpool's communities.

Friday 4th Feb, 10.00am – 12.00 noon

Meeting for people with learning disabilities, their families and carers: Olive Mount Mansion, Old Mill Lane, L15 8LW

Wednesday 9th Feb, 10.00am – 12.00 noon

Open meeting – all welcome: CENTEC, Stopgate Lane, Aintree, L9 6AW

Thursday 10th Feb, 10.00am – 12.00 noon

Men only meeting: LCVS, 151 Dale Street, L2 2AH

Thursday 17th Feb, 10.00am – 12.00 noon

Women only meeting: WHISC, 20 Bold Street, L1 4JA

For more info please email info@liverpoollink.org.uk or call the LINK team on 0151 227 5177

[Fill out our Cancer Questionnaire](#) Please help us to collect information for a report which will be passed to Liverpool PCT and which will make recommendations for the future - based on what you tell us. You can help us by completing the questionnaire and returning it to Liverpool LINK by Friday 18th March (by email or at our FREEPOST address) Thanks for your help.

Contribute

If you would like to contribute to the next edition of this update, please contact Emma on emma.squibb@cancer.org.uk 0151 794 8823 or 07770 597 185

Together we will beat cancer