

Adopting innovative MedTech into practice: The role of AHSNs

Lorna Green and Linda Magee
aka “The Lorna & Linda Show!”



What are AHSNs?

We are licenced by NHS England to:

- Speed up adoption of innovation into practice to improve clinical outcomes and patient experience
- Support economic development through co-development, testing, evaluation and early adoption and spread of new products and services

Focusing on the needs of patients and local populations and building a culture of partnership and collaboration



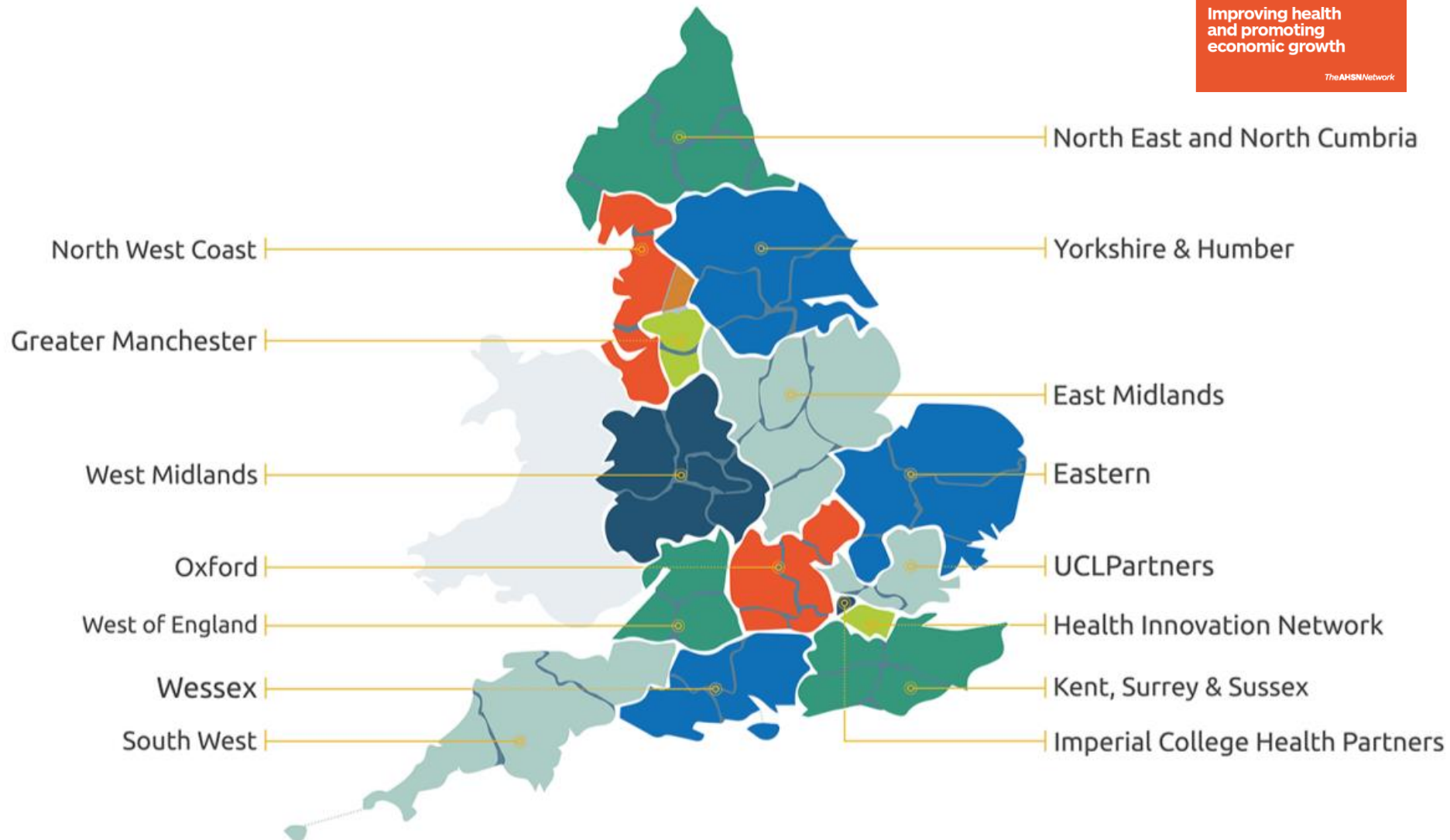
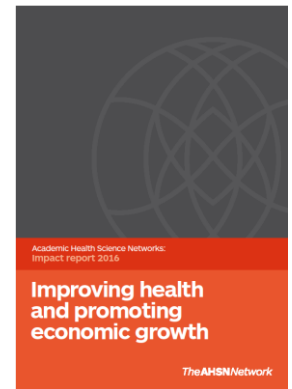
European Union
European Regional
Development Fund



INNOVATION AGENCY
Academic Health Science Network
for the North West Coast

The AHSN National Network

www.ahsnnetwork.com



National Reach and Local Delivery

- **Nationally** we collaborate as a strong network of 15 - operating across health and care to deliver improvement at pace and scale. Collectively we support an number of national programmes including
 - *NHS Innovation Accelerator*
 - *Health SBRI*
 - *Innovation Pathway*
 - *Patient Safety Collaboratives*
- **Locally** we act as honest brokers within our regions, mobilising expertise across the NHS, academia and industry to help improve lives, save money and drive economic growth.

Who do we work with?

Nationally

- NHS England, NHS Improvement and the Department of Health / Public Health England and Office for Life Sciences
- Representative bodies such as the ABHI and ABPI (representing industry), NHS Clinical Commissioners and NHS Providers
- NICE
- Third sector organisations such as charities and patient representative groups

Locally

- NHS provider trusts
- Clinical Commissioning Groups and other commissioning organisations
- Public health and social care organisations including local authorities
- Local transformation partnerships such as Sustainability and Transformation Partnerships (STPs)
- Local Universities and NIHR organisations such as CLAHRCs, Clinical Research Networks and Biomedical Research Units / Centres
- Local NHS organisations such as Strategic Clinical Networks and Senates
- Local Economic Partnerships
- Industry and cluster groups such as MediLinks, Bionow

The Innovation Pathway



THE
INNOVATION
PATHWAY

BESPOKE SERVICES COVERING THE ENTIRE INNOVATION LIFE CYCLE FROM CONCEPTION OF AN IDEA THROUGH TO ITS EVENTUAL REALISATION OF COMMERCIAL SUCCESS.



The Innovation Pathway supports the development and successful commercialisation of innovative ideas and provides a unique opportunity for SMEs to access, and benefit from, a full range of specialist services offered to the NHS and the healthcare sector. Although The Innovation Pathway can deliver a seamless transition across the entire innovation pathway, NHS Trusts and SMEs can access any and all services, in any sequence, to take new ideas to market.

Support for commercial, NHS and third sector innovators

- Advise on pathway contacts and regulatory requirements
- Provide advice on the best routes to market for products and devices
- Identify and communicate regional unmet needs within the NHS so that innovators can understand demand for their products
- Make links to national programmes such as SBRI and the NHS Innovation Accelerator
- Signpost to specialist organisations, such as academic institutions and NIHR infrastructure (CRNs) that can help with evaluation
- Broker opportunities for innovators to meet prospective NHS customers and champions (clinicians, commissioners, providers)
- Help identify opportunities for real world testing of proven innovative products to support adoption and spread – for example through test beds
- Promote successful innovations across wide geographies as a national AHSN Network
- Provide expert advice on areas such as creating business cases and developing an evidence base

IA and GMAHSN Contact Information

Innovation Agency:

Register through Business Connect enquiry form
via www.innovationagencynwc.nhs.uk

Greater Manchester AHSN:

Register on the GMAHSN Innovation Nexus
via www.gmahsn.org or www.intohealth.org



We provide additional intense support for business growth to SMEs in the life sciences sector across the two regions, funded by the EU. See details on the websites or speak to our colleagues in the room.



European Union
European Regional
Development Fund



INNOVATION AGENCY
Academic Health Science Network
for the North West Coast

Proposed future model 2018-2023

Government

Deliver AAR objectives – support local assessment of technologies and knowledge exchange; promote spread of innovation nationally.

NHS England

Translate research into practice and build stronger relationships with the scientific/academic communities and industry to develop solutions to healthcare problems. Deliver Five Year Forward View.

Partner Contributions, EU funding, industry funding, grants etc

Partnerships with academic and research institutions, NHS providers, commissioners, industry.

NHS Improvement

Coordination of the 15 Patient Safety Collaboratives to improve the safety of patients.

Role of
AHSN
Network



GREATER
MANCHESTER
ACADEMIC
HEALTH
SCIENCE
NETWORK

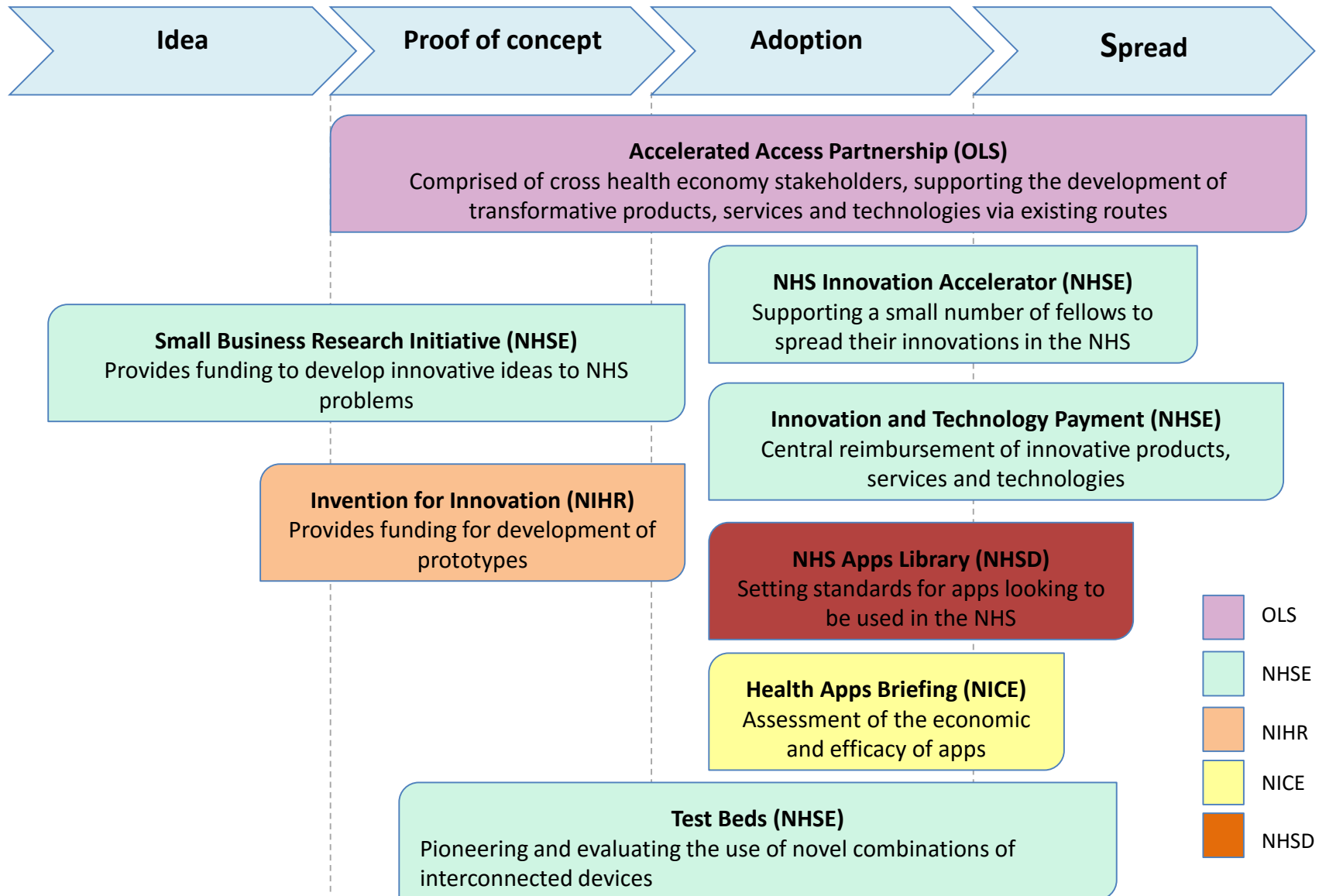


European Union
European Regional
Development Fund



INNOVATION AGENCY
Academic Health Science Network
for the North West Coast

There are a number of initiatives supporting the identification and adoption of innovative products, services and technologies



Opportunities for Industry: nationally supported, locally delivered

- Test Beds
 - 5 NHSE
 - 2 NHSE and Innovate UK
 - Wave 2 in progress
- SBRI Health
- National Innovation Accelerator
- Innovation Technology Payment
- Accelerated Access Partnership



European Union
European Regional
Development Fund



INNOVATION AGENCY
Academic Health Science Network
for the North West Coast

SBRI Health

SBRI Healthcare is an NHS England funded initiative led by the Academic Health Science Networks to develop technology solutions for known healthcare challenges. Our focus for Summer 2017 is Cancer, screening and accelerated diagnosis as well as solutions for improved management of those who have survived.

- Applications for innovations that can enhance the screening, diagnosis or management of cancer.
- Up to £100,000 of funding for Phase one (feasibility) and up to £1m for Phase Two (development)
- A truly innovative offer that could transform screening, diagnosis or management of cancer.
- NHS needs will be provided in an SBRI Healthcare briefing document available the week commencing 24th July, with briefing events London on Tuesday 25th and Manchester on Thursday the 27th.

The deadline for entries will be 4th September. Register at www.sbrihealthcare.com to receive the full briefing and details (available from 25th July).

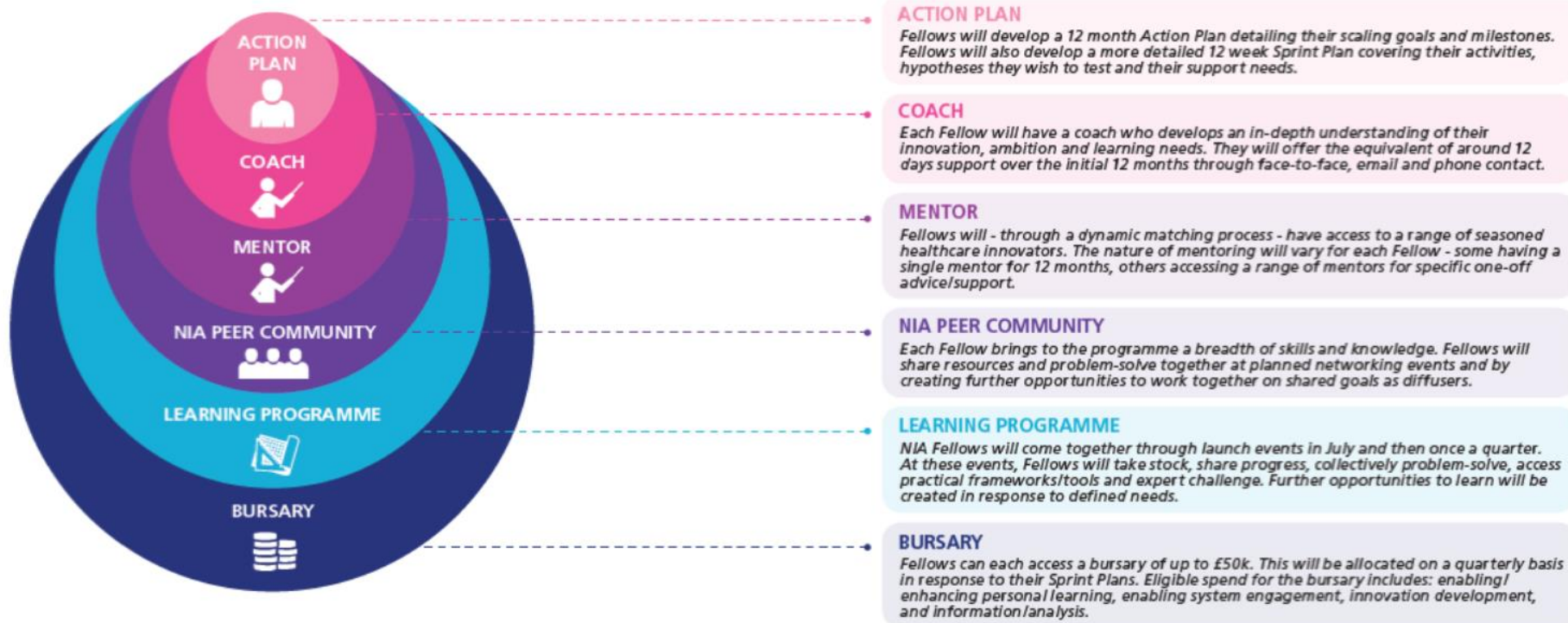


European Union
European Regional
Development Fund



INNOVATION AGENCY
Academic Health Science Network
for the North West Coast

National Innovation Accelerator



Apply: <http://nhsaccelerator.com/>

Applications will be accepted from 14 June 2017 to midnight on 26 July 2017.

Interview dates: 26 – 28 September 2017.

Confirmation: Successful applicants will be contacted on 12 October 2017.

The Innovation and Technology Payment (ITP)

- The ITP aims to support the NHS in adopting innovation by removing financial or procurement barriers to uptake of innovative products or technologies.
- Competitive process to identify innovations and technologies that will offer the greatest quality and efficiency benefits with wider adoption.
- The ITP is looking to support medical devices, digital platforms and technologies. The programme is not suitable for pharmaceutical products or research projects.
 - select a range of cost effective innovations within budgetary confines
 - a wide-reaching impact on patient care
 - maximise learning and foster culture change.
- ITP is specifically focused on low cost innovations which can deliver significant patient outcomes and savings to the NHS.
- The programme will be delivered in partnership with the AHSNs, sponsors, national and international experts.
- Applicants can be from healthcare, academia, commercial or voluntary sectors.
- Agreed payment mechanism or procurement will be operational from April 2018.
- Day-to-day support and reporting via NHS E's Innovation and Research Unit.

The Innovation and Technology Payment (ITP)

Key dates

Activity	Date
Open for registrations of interest	14 June 2017
Open for applications	17 July 2017
Final application deadline	8 th September 2017 (12:00 noon)
Screening	September 2017
Application sifting round 1	October 2017
Application sifting round 2	November 2017
Decision panel select final cohort	December 2017
Outcomes communicated to applicants	December 2017
Definition of ITP theme agreed	January 2018
Strategic planning period	January - March 2018
Scheme launched	April 2018

Accelerated Access Partnership

The Accelerated Access Review recommended that a network of Innovation Exchanges could play a key role in supporting the adoption and uptake of healthcare innovation.

- Hosted by AHSNs, Innovation Exchanges will be a central place that stakeholders can go to for information, guidance and support.
- Their core functions will include:
 - 1) Identifying need and communicating regional priorities** – Help innovators understand what and where are the healthcare demands, and the evidence requirements
 - 2) Signposting** – Act as a ‘first port of call for information’
 - i. Direct innovators to additional support or market access
 - ii. Direct patients towards information about trials and pilots in the region, or new products
 - iii. Offer practical support to commissioners/providers on uptake, collaboration opportunities, dissemination of best practice
 - 3) Validation in a real world setting** – Broker regional partnerships with commissioners and providers to offer real world testing opportunities
 - 4) Spread and adoption of innovation across the system** – Support scaling up of innovations which are promising on a local level

In Summary

- **AHSNs are catalysts** for the spread of innovation at pace and scale - improving health, generating economic growth and helping facilitate change across whole health and social care economies
- **AHSNs connect** - as member organisations we are well placed to mobilise cross-sector buy-in, developing powerful regional networks of NHS and academic organisations, local authorities, third sector and industry: responding to diverse patient and population needs through partnership & collaboration
- **AHSNs create** the right environment for relevant industries to work with the health and social care system