

**From:** Liverpool-ECMC  
**Sent:** 04 March 2020 16:41  
**To:** Liverpool-ECMC  
**Subject:** Liverpool ECMC Newsletter March 2020 - Solid Tumours

**Follow Up Flag:** Follow up  
**Flag Status:** Completed

## LIVERPOOL ECMC NEWSLETTER MARCH 2020



### **ASTRAZENECA JUNIOR INVESTIGATOR MEETING 20<sup>TH</sup>- 21<sup>ST</sup> MARCH 2020**

AstraZeneca are hosting a Junior Investigator meeting on Friday 20th and Saturday 21st March 2020 in the Malmaison, Manchester.

This meeting is aimed at healthcare professionals who have a clear focus on oncology or immunology, and an interest in actively contributing to clinical and translational research in the UK.

The meeting will address a range of clinical research applications including cancer biology, screening, prevention and diagnosis, with the agenda made up of sessions that focus on the design and performance of oncology-related clinical research as well as methods of data and statistical analysis.

**Please click [here](#) to download the agenda.**

**Information on how to register can be found [here](#).**

## **SHEFFIELD ECMC BONE ONCOLOGY WORKSHOP - FRIDAY 5<sup>TH</sup> JUNE 2020**



Sheffield ECMC is running a free **ECMC Bone Oncology Workshop in Sheffield on Friday 5th June 2020**. The exciting programme includes short talks from world leaders in the bone oncology field who will address the issues of who to treat, when to treat and with what.

The workshop is suitable for all clinicians and researchers with an interest in gaining a better understanding of bone oncology.

Please contact **Caroline Potts** to register.



## **INAUGURAL ECMC LIQUID BIOPSY FORUM - FRIDAY 22<sup>ND</sup> MAY 2020**

The Inaugural ECMC Liquid Biopsy Forum will be held on 22nd May at the Alderley Park Conference Centre.

The forum will focus on ECMC network collaborations involving liquid biopsies and a more detailed assessment of the technical and logistical challenges in this pursuit.

More information and how to register can be found **here**.



## NEW STUDIES OPEN

### **RAGNAR**

This is a Phase 2 study of erdafitinib in subjects with advanced solid tumors (other than urothelial tumors) and FGFR gene alterations.

Erdafitinib is a selective and potent pan FGFR tyrosine kinase inhibitor with demonstrated clinical activity in subjects with solid tumors identified to have alterations in the FGFR pathway.

The Screening Phase will start with the Molecular Eligibility Screening Period. Patients with study eligible FGFR alterations may be identified by central next-generation sequencing from tissue sample, or based on local NGS results.

#### **Key Inclusion Criteria**

- Histologic demonstration of an unresectable, locally advanced, or metastatic solid tumor malignancy bearing an FGFR mutation or fusion, as determined by local or central laboratory screening.
- Subject must have received at least one prior line of systemic therapy in the metastatic setting.
- Measurable disease according to RECIST v1.1 or RANO for primary brain tumors.
- Subject does not have standard of care options that have shown meaningful clinical benefit for the relevant underlying histology and line of therapy or the subject is unable to tolerate the therapy.
- For adults ( $\geq 18$  years of age), ECOG performance status Grade 0 or 1

#### **Key Exclusion Criteria**

- The presence of FGFR gatekeeper and resistance alterations. Mutations in the following positions: FGFR1 V561; FGFR2 V564; FGFR2 N549; FGFR3 V555; and FGFR4 V550.
- For NSCLC subjects only - pathogenic somatic mutations or gene fusions in the following genes: EGFR, ALK, ROS1, NTRK, and BRAF V600E (PIK3CA and PTEN alteration status must be known at the time of enrollment for retrospective data analysis).

- Symptomatic central nervous system metastases (except for subjects with primary CNS tumors).
- Received prior FGFR inhibitor treatment.

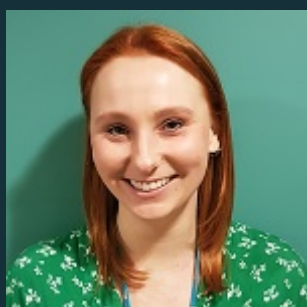
Please contact the **ECMC Team** with any referrals or for further information.

## LIVERPOOL ECMC EARLY PHASE TRIALS CLINIC IS OPEN



The ECMC Early Phase Trials Clinic is now open. This weekly clinic runs every Monday afternoon at the Clatterbridge Cancer Centre.

Patients who are potentially eligible and interested in participating in phase I and non-randomised phase II clinical trials can be referred to this clinic via the following email address: **[ccf-tr.ecmcreferrals@nhs.net](mailto:ccf-tr.ecmcreferrals@nhs.net)**.



### OPEN TRIALS

Please contact **Jennie Derham** for potential referral to these trials.

- Telephone: 0151 556 5443
- Mobile: 07554 416 293
- E-mail: **[ccf-tr.ecmcreferrals@nhs.net](mailto:ccf-tr.ecmcreferrals@nhs.net)**

### ADVANCED SOLID TUMOURS

- **ACIT-1** – A Phase I clinical study to determine the optimal dose for the safe immune restoration and immune response of allogeneic cell immunotherapy (ACIT-1) in adult cancer patients – *All advanced solid tumours*.
- **CHECKMATE 8KX** – Phase I/II pharmacokinetic multi-tumor study of subcutaneous formulation of nivolumab monotherapy – *Metastatic squamous*

*or non-squamous NSCLC, Advanced or Metastatic Renal Cell Carcinoma, Melanoma, Hepatocellular carcinoma, Metastatic colorectal cancer.*

- **RAGNAR** – A Phase 2 Study of Erdafitinib in Subjects with Advanced Solid Tumors and FGFR Gene Alteration – *Advanced or metastatic solid tumours.*
- **REPLIMUNE RP1** – An Open-Label, Multicenter, Phase 2 Study of RPI in Combination with Nivolumab in Patients with Microsatellite Instability High or Mismatch Repair Deficient Tumors – *Melanoma, Non-Melanoma Skin Cancer, Urothelial Bladder Carcinoma.*
- **REPLIMUNE RP2** – An Open-Label, Multicenter, Phase 1 Study of RP2 as a Single Agent and in Combination with PD1 Blockade in Patients *with Solid Tumors*

## **BREAST**

- **CT7001 001** – A Modular, Multipart, Multiarm, Open-label, Phase I/II Study to Evaluate the Safety and Tolerability of CT7001 Alone and in Combination With Anti-cancer Treatments in Patients With Advanced Malignancies– *Advanced breast cancer.*
- **GO40987** – A Phase I, Multicenter, Open-Label Preoperative, Short-Term Window Study of GDC-9545 in Postmenopausal Women with *Stage I-III Operable, Estrogen Receptor-Positive Breast Cancer*
- **plasmaMATCH** – A multiple parallel cohort, non-randomised, open label, multi-centre phase IIa clinical trial aiming to provide proof of principle efficacy for designated targeted therapies in patients with advanced breast cancer where the targetable mutation is identified through ctDNA screening – *Advanced breast cancer.*

## **HEAD & NECK**

- **Cambridge Brain Mets Trial 1** – A proof of principle phase 1b / randomised phase 2 study of afatinib penetration into cerebral metastases for patients undergoing neurosurgical resection, both with and without prior low-dose, targeted radiotherapy – *Brain metastases from lung or breast primary.*
- **NICO** – Neoadjuvant and adjuvant nivolumab as Immune Checkpoint inhibition in oral cavity cancer – *squamous cell carcinoma of the oral cavity.*

## **HPB / UPPER GI**

- **QED BGJ398** - A phase II multicenter, single arm study of oral BGJ398 in adult patients with advanced or metastatic cholangiocarcinoma with FGFR2

gene fusions or other FGFR genetic alterations who failed or are intolerant to platinum-based chemotherapy- *Cholangiocarcinoma*

## LUNG

- **National Lung Matrix Trial** – Multi-drug, genetic marker-directed, non-comparative, multi-centre, multi-arm phase II trial in non-small cell lung cancer.

## MELANOMA

- **CirculAting Tumour DNA gUided therapy Switch (CActUS)** – A parallel arm, biomarker driven, phase II feasibility trial to determine the role of circulating tumour DNA in guiding a switch between targeted therapy and immune therapy in patients with *advanced cutaneous melanoma*.

## NON-CTIMPS

- **HYST** – Hypersensitivity Study: A Mechanistic Investigation into Drug and Chemical Induced Hypersensitivity Reactions
- **PRIMM** – Predicting Response to Immunotherapy for Melanoma with gut Microbiome and metabolomics (the PRIMM study)
- **PROACT** – Patient Reported Opinions About Clinical Tolerability
- **SMP-2** – The Cancer Research UK Stratified Medicine Programme: Pilot Study

**Find out more...**

## EVENTS & JOB OPPORTUNITIES

### EVENTS

- **AstraZeneca Junior Investigator Meeting (20<sup>TH</sup>-21<sup>ST</sup> MARCH 2020)**
- **Sheffield ECMC Bone Oncology Workshop (5<sup>TH</sup> JUNE 2020)**
- **<https://www.ecmcnetwork.org.uk/events>**

## JOB OPPORTUNITIES

- [Advanced Research Practitioner - Clatterbridge Cancer Centre NHS Foundation Trust - Grade 7 - Closing Date: 5th March 2020 \(1\)](#)
- [Advanced Research Practitioner - Clatterbridge Cancer Centre NHS Foundation Trust - Grade 7 - Closing Date: 5th March 2020 \(2\)](#)
- [Senior Trials Manager - University of Liverpool - Grade 8 - Closing Date: 20th March 2020](#)

## CONTACT US

If you require any information which isn't on the newsletter please contact the Liverpool ECMC Team via [e-mail](#).

*Copyright © 2019 Liverpool ECMC, All rights reserved.*

**Our mailing address is:**

[livecmc@liv.ac.uk](mailto:livecmc@liv.ac.uk)